

# NISH

## NATIONAL INSTITUTE OF SPEECH & HEARING

(An autonomous organisation under the Social Justice Department, Government of Kerala)

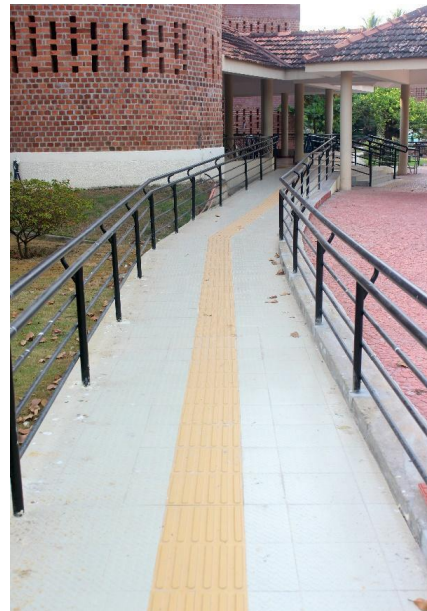
Accredited as Excellent Institution by RCI | ISO 9001:2015 Certified | Accredited by NAAC with A Grade

### ACCESSIBILITY AT NISH

Mr Sandeep, ISL trainer was sick and slept off in the sick room. As he did not wake up even after repeated banging of doors, messages, phone calls, he was left alone in NISH. Next day while asking for a solution, he suggested a cheap one- a vibrator under the cot and a switch outside the room. Thus accessibility was made one of the agendas of **12th IQAC** held on May, 17, 2018. It was decided to entrust Samarthyam, National Centre for Accessible Environments, a national level organisation for undertaking the process. Thus NISH initiated the process of conducting accessibility audits. Accessibility is one of the major thrust areas of the RPwd Act 2016. The two days extensive programme included an accessibility audit of the campus, creating awareness on Universal Accessibility, Interactive sessions among the Accessible consultants, NISH personals and students.

#### SIPDA Fund:

Department of Empowerment of Persons with Disability, Ministry of Social Justice and Empowerment, Gol sanctioned Rs 1,49,00,000/- as grant in aid under the SIPDA scheme to create barrier-free environment at NISH.



*Shirly G*

Shirly G

**IQAC Coordinator**

Email id: [shirlyg@nish.ac.in](mailto:shirlyg@nish.ac.in)